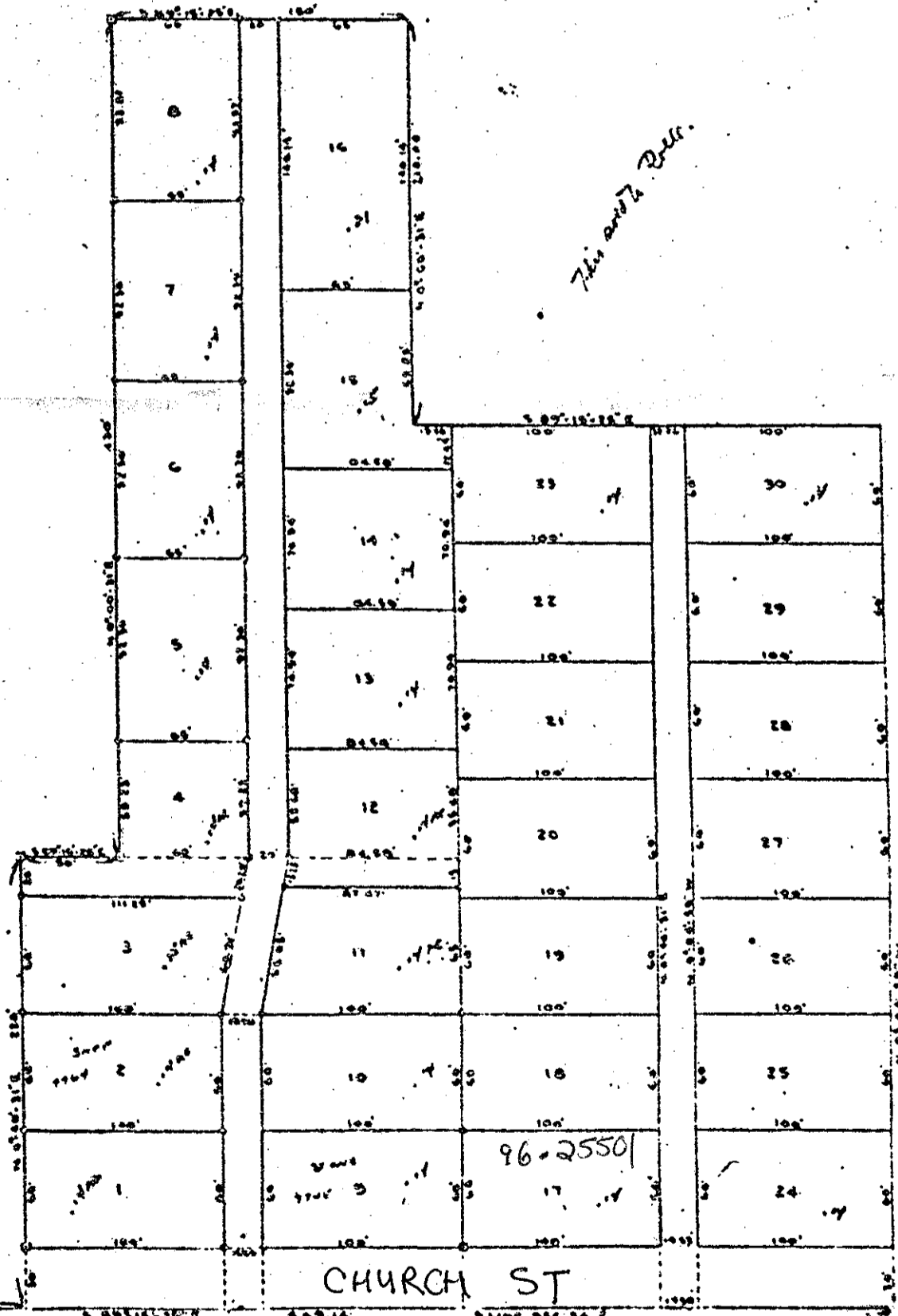


AM-53 - REPLAT OF LOTS IN 1ST ADDN
TO PALM GARDENS (UNREC)

AM

A REPLAT OF
LOTS 309 THROUGH 317 AND 297, 298, 299, 284, 285, 286, AND 292 THROUGH 296
OF THE FIRST ADDITION TO PALM GARDENS AN UNRECORDED
PLAT IN SECTION 34, TOWNSHIP 40 SOUTH, RANGE 42 EAST.

SECTION 34
TWP 40 S, RGE 42 E.



© DANIEL F. ZIMMERMAN
H DANIEL F. ZIMMERMAN